

**STANDARD DEPARTURE
CHART INSTRUMENT(SID) - ICAO**

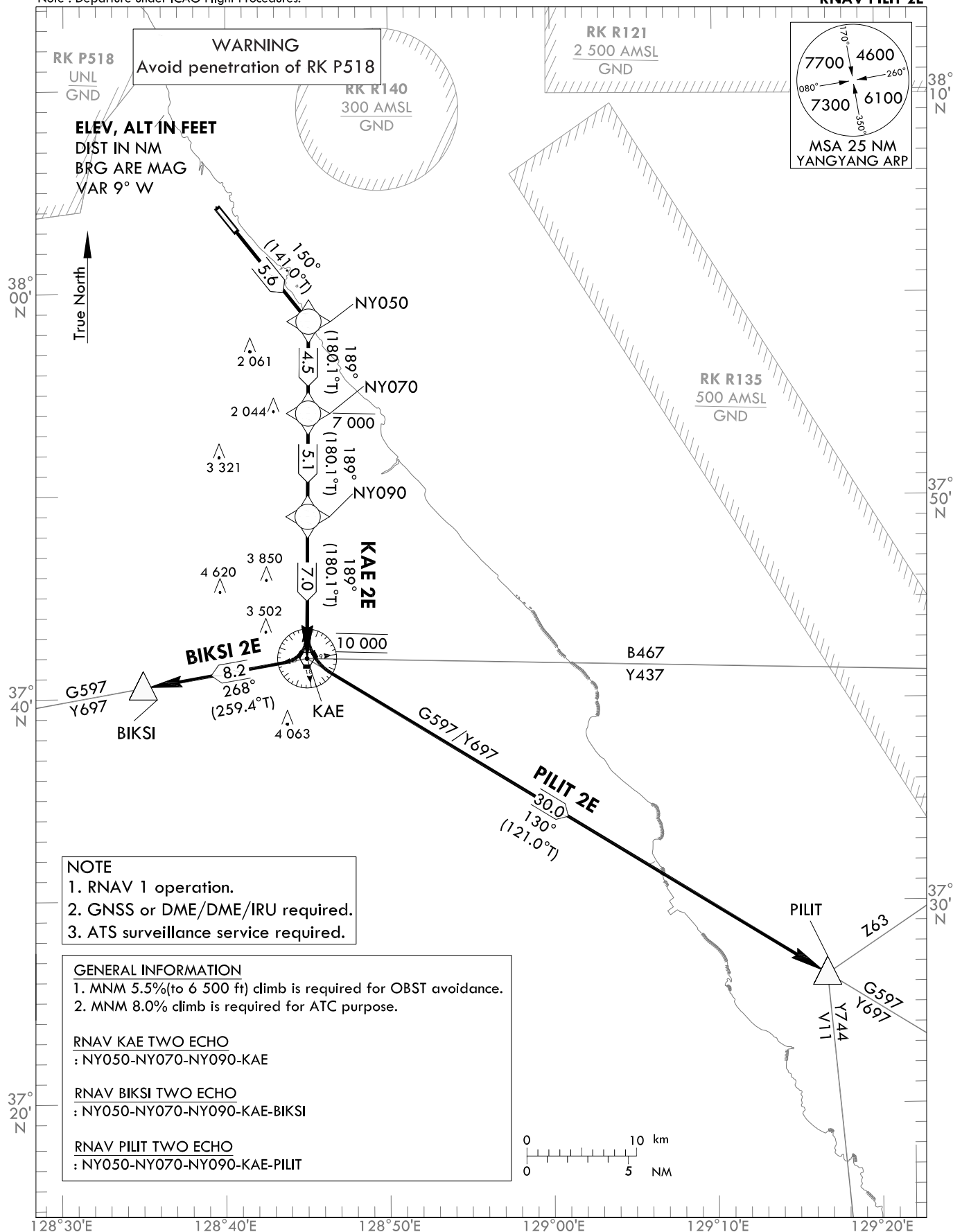
TRANSITION ALT 14 000
TRANSITION LVL FL 140

GANGNEUNG DEP 124.6
YANGYANG TWR 118.85
124.375

YANGYANG/InH(RKNY)

RWY 15
RNAV KAE 2E
RNAV BIKSI 2E
RNAV PILIT 2E

Note : Departure under ICAO Flight Procedures.



Change : Information of standard instrument departure procedure for RWY 15.

YANGYANG/Intl(RKNY)
RWY 15
RNAV KAE 2E, RNAV BIKSI 2E
RNAV PILIT 2E

AERONAUTICAL DATA TABULATION

Standard Instrument Departure Procedure Coding Tables

RNAV KAE 2E									
Serial Number	Path Descriptor	Waypoint Identifier	Fly-over	Course/Track °M(°T)	Distance (NM)	Turn direction	Altitude (ft)	Speed (kt)	Coordinates
001	CF	NY050	-	150(141.0)	5.6	-	-	-	37°58'41.3"N 128°45'15.6"E
002	TF	NY070	-	189(180.1)	4.5	-	-7 000	-	37°54'09.1"N 128°45'15.0"E
003	TF	NY090	-	189(180.1)	5.1	-	-	-	37°49'03.2"N 128°45'14.4"E
004	TF	KAE	-	189(180.1)	7.0	-	@10 000	-	37°42'02.8"N 128°45'13.6"E
									VPA/TCH*
									Navigation specification
									Remarks

RNAV BIKSI 2E									
Serial Number	Path Descriptor	Waypoint Identifier	Fly-over	Course/Track °M(°T)	Distance (NM)	Turn direction	Altitude (ft)	Speed (kt)	Coordinates
001	CF	NY050	-	150(141.0)	5.6	-	-	-	37°58'41.3"N 128°45'15.6"E
002	TF	NY070	-	189(180.1)	4.5	-	-7 000	-	37°54'09.1"N 128°45'15.0"E
003	TF	NY090	-	189(180.1)	5.1	-	-	-	37°49'03.2"N 128°45'14.4"E
004	TF	KAE	-	189(180.1)	7.0	-	@10 000	-	37°42'02.8"N 128°45'13.6"E
005	TF	BIKSI	-	268(259.4)	8.2	-	-	-	37°40'32.0"N 128°35'04.0"E
									VPA/TCH*
									Navigation specification
									Remarks

RNAV PILIT 2E									
Serial Number	Path Descriptor	Waypoint Identifier	Fly-over	Course/Track °M(°T)	Distance (NM)	Turn direction	Altitude (ft)	Speed (kt)	Coordinates
001	CF	NY050	-	150(141.0)	5.6	-	-	-	37°58'41.3"N 128°45'15.6"E
002	TF	NY070	-	189(180.1)	4.5	-	-7 000	-	37°54'09.1"N 128°45'15.0"E
003	TF	NY090	-	189(180.1)	5.1	-	-	-	37°49'03.2"N 128°45'14.4"E
004	TF	KAE	-	189(180.1)	7.0	-	@10 000	-	37°42'02.8"N 128°45'13.6"E
005	TF	PILIT	-	130(121.0)	30.0	-	-	-	37°26'31.4"N 129°17'30.8"E
									VPA/TCH*
									Navigation specification
									Remarks

* The term TCH equates to the use of the term RDH, within this context of the FAS data block.

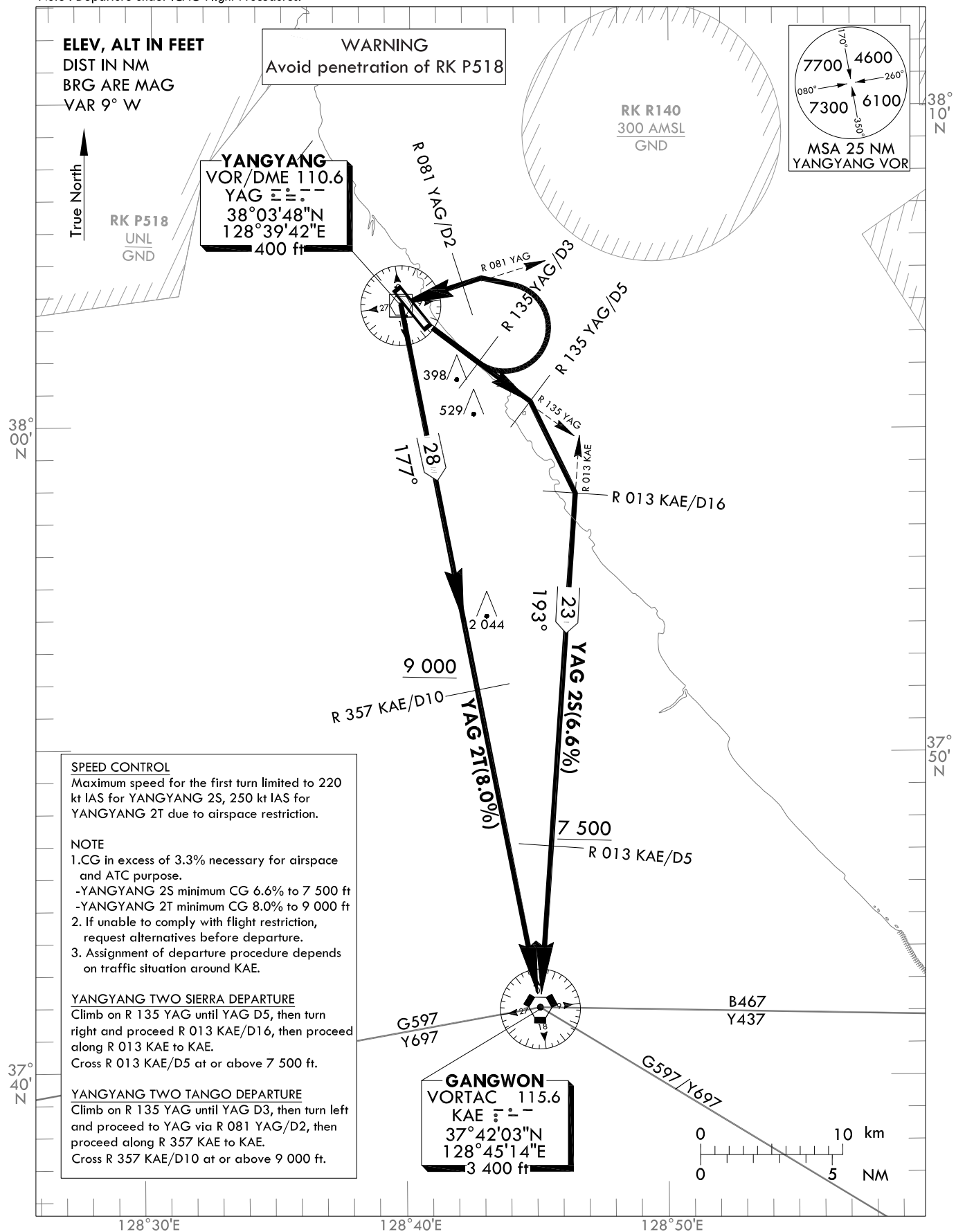
**STANDARD DEPARTURE
CHART INSTRUMENT(SID) - ICAO**

TRANSITION ALT 14 000
TRANSITION LVL FL 140

GANGNEUNG DEP 124.6
YANGYANG TWR 118.85
124.375

YANGYANG/Intl(RKNY)
RWY 15
YAG 2S
YAG 2T

Note : Departure under ICAO Flight Procedures.



Change : Information of standard instrument departure procedure for RWY 15.

INTENTIONALLY

LEFT

BLANK

**STANDARD DEPARTURE
CHART INSTRUMENT(SID) - ICAO**

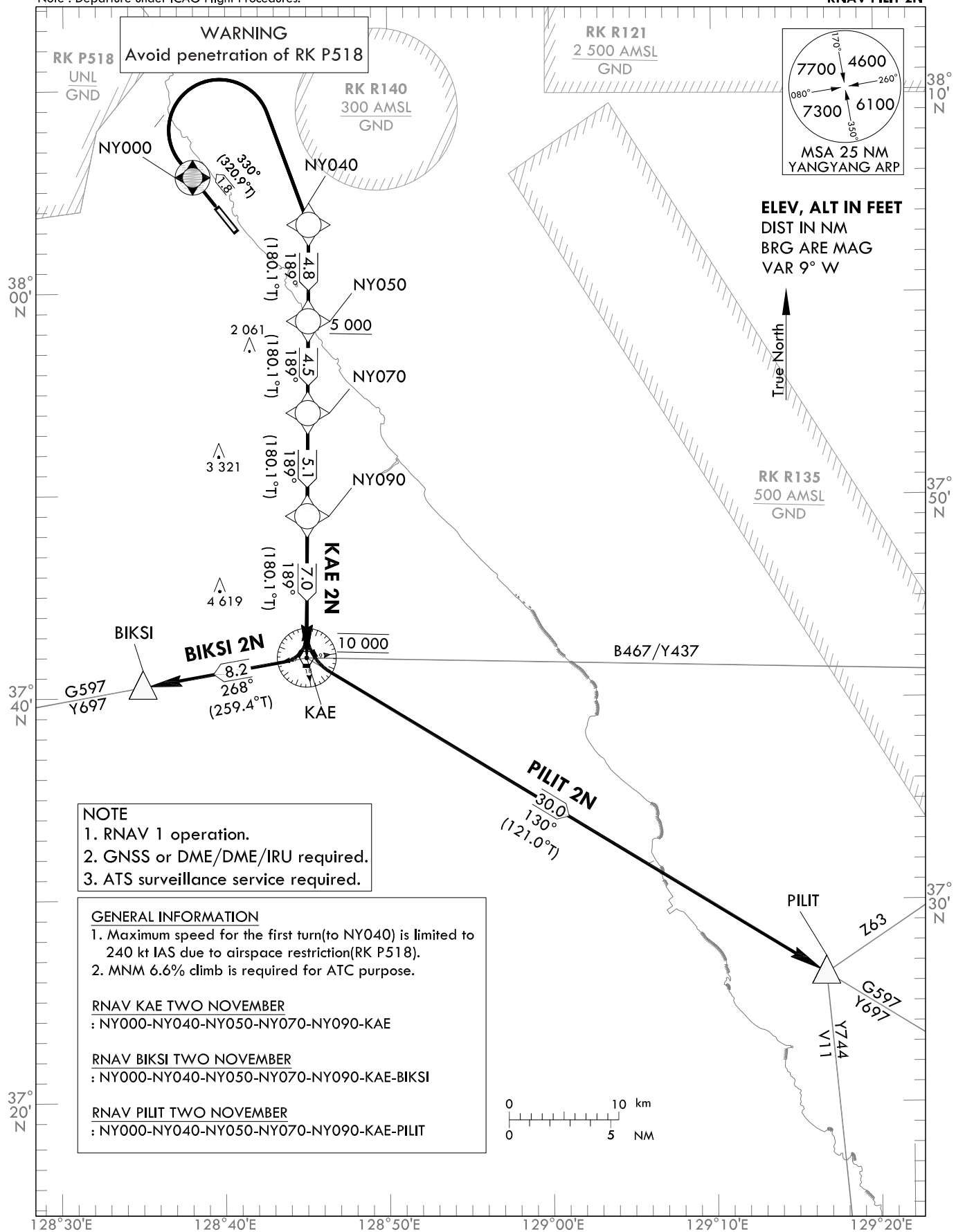
TRANSITION ALT 14 000
TRANSITION LVL FL 140

GANGNEUNG DEP 124.6
YANGYANG TWR 118.85
124.375

YANGYANG/Intl(RKNY)

RWY 33
RNAV KAE 2N
RNAV BIKSI 2N
RNAV PILIT 2N

Note : Departure under ICAO Flight Procedures.



Change : Information of standard instrument departure procedure for RWY 33.

YANGYANG/Intl(RKNY)
RWY 33
RNAV KAE 2N, RNAV BIKSI 2N
RNAV PILIT 2N

AERONAUTICAL DATA TABULATION

Standard Instrument Departure Procedure Coding Tables

RNAV KAE 2N

Serial Number	Path Descriptor	Waypoint Identifier	Fly-over	Course/Track °M(°T)	Distance (NM)	Turn direction	Altitude (ft)	Speed (kt)	Coordinates	VPA/ TCH*	Navigation specification	Remarks
001	CF	NY000	Y	330(320.9)	1.8	-	-	-240	38°05'45.5"N 128°38'00.9"E	-	RNAV 1	-
002	DF	NY040	-	-	-	R	-	-240	38°03'27.0"N 128°45'16.2"E	TCH*	RNAV 1	-
003	TF	NY050	-	189(180.1)	4.8	-	+5 000	-	37°58'41.3"N 128°45'15.6"E	-	RNAV 1	-
004	TF	NY070	-	189(180.1)	4.5	-	-	-	37°54'09.1"N 128°45'15.0"E	-	RNAV 1	-
005	TF	NY090	-	189(180.1)	5.1	-	-	-	37°49'03.2"N 128°45'14.4"E	-	RNAV 1	-
006	TF	KAE	-	189(180.1)	7.0	-	@10 000	-	37°42'02.8"N 128°45'13.6"E	-	RNAV 1	-

RNAV BIKSI 2N

Serial Number	Path Descriptor	Waypoint Identifier	Fly-over	Course/Track °M(°T)	Distance (NM)	Turn direction	Altitude (ft)	Speed (kt)	Coordinates	VPA/ TCH*	Navigation specification	Remarks
001	CF	NY000	Y	330(320.9)	1.8	-	-	-240	38°05'45.5"N 128°38'00.9"E	-	RNAV 1	-
002	DF	NY040	-	-	-	R	-	-240	38°03'27.0"N 128°45'16.2"E	TCH*	RNAV 1	-
003	TF	NY050	-	189(180.1)	4.8	-	+5 000	-	37°58'41.3"N 128°45'15.6"E	-	RNAV 1	-
004	TF	NY070	-	189(180.1)	4.5	-	-	-	37°54'09.1"N 128°45'15.0"E	-	RNAV 1	-
005	TF	NY090	-	189(180.1)	5.1	-	-	-	37°49'03.2"N 128°45'14.4"E	-	RNAV 1	-
006	TF	KAE	-	189(180.1)	7.0	-	@10 000	-	37°42'02.8"N 128°45'13.6"E	-	RNAV 1	-
007	TF	BIKSI	-	268(259.4)	8.2	-	-	-	37°40'32.0"N 128°35'04.0"E	-	RNAV 1	-

RNAV PILIT 2N

Serial Number	Path Descriptor	Waypoint Identifier	Fly-over	Course/Track °M(°T)	Distance (NM)	Turn direction	Altitude (ft)	Speed (kt)	Coordinates	VPA/ TCH*	Navigation specification	Remarks
001	CF	NY000	Y	330(320.9)	1.8	-	-	-240	38°05'45.5"N 128°38'00.9"E	-	RNAV 1	-
002	DF	NY040	-	-	-	R	-	-240	38°03'27.0"N 128°45'16.2"E	TCH*	RNAV 1	-
003	TF	NY050	-	189(180.1)	4.8	-	+5 000	-	37°58'41.3"N 128°45'15.6"E	-	RNAV 1	-
004	TF	NY070	-	189(180.1)	4.5	-	-	-	37°54'09.1"N 128°45'15.0"E	-	RNAV 1	-
005	TF	NY090	-	189(180.1)	5.1	-	-	-	37°49'03.2"N 128°45'14.4"E	-	RNAV 1	-
006	TF	KAE	-	189(180.1)	7.0	-	@10 000	-	37°42'02.8"N 128°45'13.6"E	-	RNAV 1	-
007	TF	PILIT	-	130(121.0)	30.0	-	-	-	37°26'31.4"N 129°17'30.8"E	-	RNAV 1	-

* The term TCH equates to the use of the term RDH, within this context of the FAS data block.

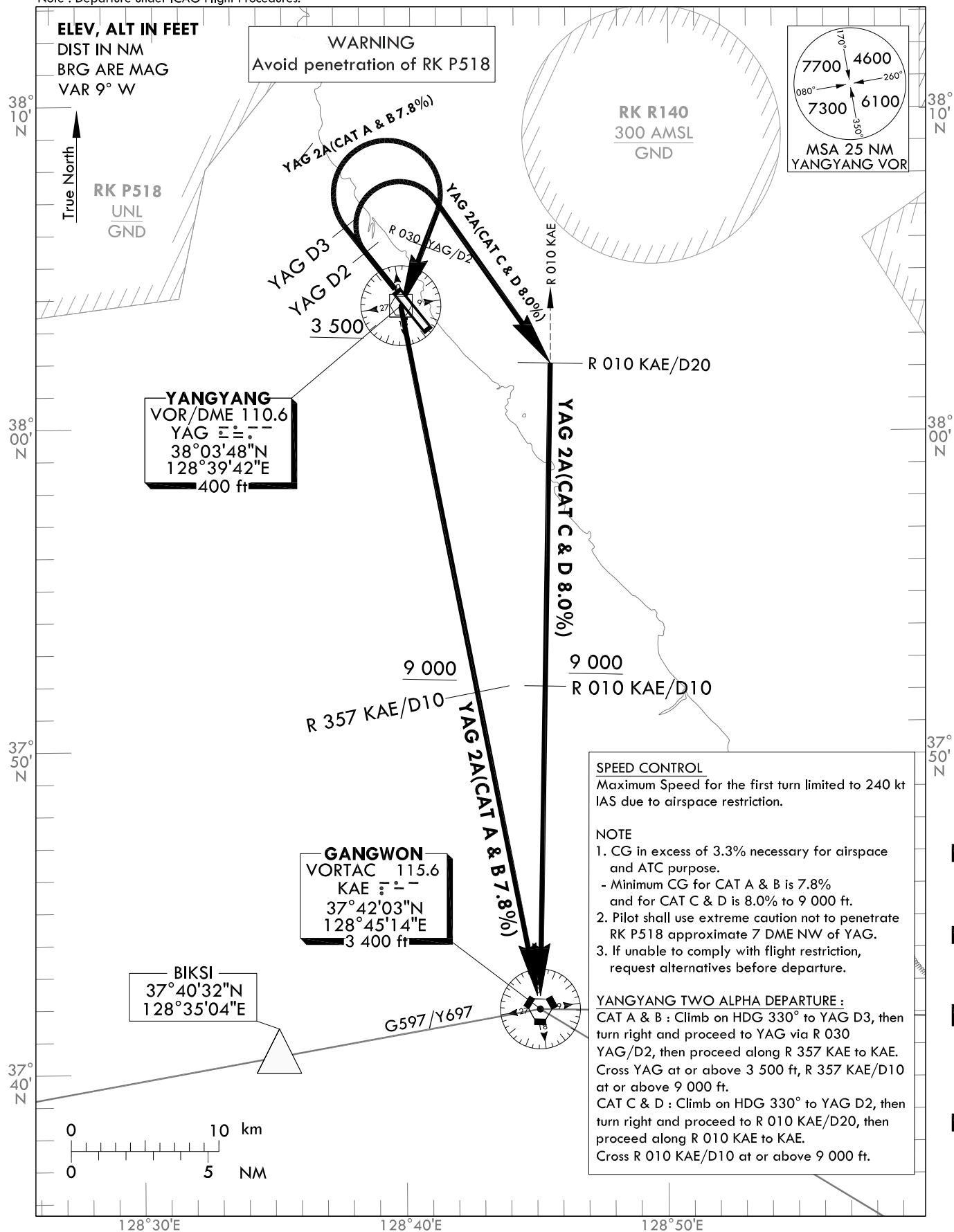
**STANDARD DEPARTURE
CHART INSTRUMENT(SID) - ICAO**

TRANSITION ALT 14 000
TRANSITION LVL FL 140

GANGNEUNG DEP 124.6
YANGYANG TWR 118.85
124.375

YANGYANG/Intl(RKNY)
RWY 33
YAG 2A

Note : Departure under ICAO Flight Procedures.



Change : Information of standard instrument departure procedure for RWY 33.

OFFICE OF CIVIL AVIATION

AIRAC AIP AMDT 9/22
Effective : 1600UTC 5 OCT 2022

INTENTIONALLY

LEFT

BLANK